



St. Vincent de Paul Catholic Church

Our Lord Jesus Christ, King of the Universe
November 22, 2020

Parish Mission

We are one Church: loving Jesus, serving Jesus, and sharing Jesus.

Parish Vision

We are a vibrant Catholic church serving a diverse community in a safe and welcoming environment where we care for all people along their faith journey.

Core Values

Discipleship • Hospitality
Serving • Worship

Weekend Masses

Saturday, 5:00 p.m.
Sunday 7:30, 9:00, 10:45 a.m.,
3:00 p.m. (Spanish)

Weekday Masses

Monday 6:30 a.m.
Tuesday 6:30 a.m.
Wednesday 6:30 a.m., 5:15 p.m.
Thursday 6:30, 8:00 a.m., 12:10 p.m.
Friday 6:30, 8:00 a.m.
Saturday 6:30 a.m.

Confessions

Saturday 3:30 - 4:30 p.m.
or by appointment

A Season for Giving

As we prepare for Christmas through our celebration of Advent, St. Vincent de Paul Parish is again sponsoring the **Foster Care Christmas Project**, the collection of gifts for children living in foster care. In addition to foster children, the parish will also assist Whole Health Outreach to provide Christmas gifts for children in the Ellington, Missouri, area.



Beginning this weekend, November 21 - 22, gift tags will be posted on the bulletin board in the gathering area. Each child will have four tags posted: two for items the child needs (clothing, socks, etc.) and two tags for things the child wishes for (toys, etc.). You are invited to take a tag and purchase the requested gift. Return the tag with the item by December 6. ***If you bring your gift on a weekend, please leave it on the designated table in the gathering area. Gifts brought during the week and all gift cards must come to the parish office.*** If you have a question about a gift or cannot find the particular item, please call the parish office at 335-7667 for assistance. Each gift has to be checked and recorded so the gifts should not be wrapped. However, clothing should be packed in gift boxes. Because the children receive many used items throughout the year, please send new gifts only.

Most of us are unable to accept a foster child into our home, but this is one small way we can assist foster parents who are generously caring for these children. In addition to the gift you may be giving, please remember to pray for the foster children, their families, and the foster families who care for them.

*Debbie Baumgart, Julie Schuchardt, Jamie Shaffar,
and the St. Vincent Parish Office Staff*



1913 Ritter Drive • Cape Girardeau, Missouri 63701
573-335-7667 • Fax 573-335-0034 • www.svcape.com

Serving the Catholic Community since April 9, 1836

• Mass Intentions •

Monday, November 23

St. Clement I, St. Columban, Blessed Michael Agustin Pro

6:30 am Pablo Mendoza Garcia (living)

5:15 pm Mass of Remembrance

Tuesday, November 24

St. Andrew Dung-Lac and Companions

6:30 am Cletus Kluesner ☩

Wednesday, November 25

St. Catherine of Alexandria

6:30 am Gene and Vera Rhodes (Ann.) ☩

5:15 pm Living and Deceased Members of the
Lazar and Delores Ruga Family

Thursday, November 26 Thanksgiving

6:30 am Ray and Geneva Viox ☩

9:00 am Living and Deceased Members of the
Eugene and Eleanor Nenninger Family

Friday, November 27

6:30 am Joseph Yuede ☩

Saturday, November 28

6:30 am Fr. Bob Brockland, C.M. (living)

5:00 pm Harold Siebert ☩

Sunday, November 29

First Sunday of Advent

7:30 am Deceased Members of the
Richard Geringer Family

9:00 am Alfreda and Clyde Bohnert ☩

10:45 am St. Vincent de Paul Parish Family

3:00 pm Antonio Trejo-Patino ☩
(Bilingual)

• Prayer Requests •

Please remember the sick, the hospitalized, the homebound, and those who care for them. Pray also for those suffering from COVID-19 and for all healthcare workers.

Act of Spiritual Communion

The “**Act of Spiritual Communion**” is a prayer for anyone who desires to receive the Eucharist but is unable.

“My Jesus, I believe that You are present in the Most Holy Sacrament. I love You above all things, and I desire to receive You into my soul. Since I cannot at this moment receive You sacramentally, come at least spiritually into my heart. I embrace You as if You were already there and unite myself wholly to You. Never permit me to be separated from You. Amen.”



When the Son of Man comes in glory, may we be among those who have fed the hungry, welcomed the stranger, and clothed the naked. For Jesus tells us clearly that it is those who have demonstrated good stewardship by sharing their gifts with the less fortunate who will receive God's blessing and inherit the kingdom.

Collection for Catholic Charities

This Sunday, November 22, is the annual collection to support the work of Catholic Charities of Southern Missouri. Thousands of individuals and families turn to Catholic Charities every year for help. Due to the pandemic, the number of those Catholic Charities is serving has increased dramatically — many have never before needed assistance. Catholic Charities responds to all with Christ-like compassion in the name of the entire Catholic community. Please be a partner this year by making a generous donation to the collection in support of Catholic Charities. This collection is an opportunity for Catholics throughout the diocese of Springfield-Cape Girardeau to unite to *Reach Out, Provide Hope, and Change Lives!*

Annual Mass of Remembrance

The annual Mass of Remembrance will be celebrated on **Monday, November 23, at 5:15 p.m.** As we close the month of November, in which the church celebrates the communion of saints and souls, a special Mass will be celebrated to commemorate our loved ones who have gone before us. Please join us that evening as we celebrate the lives of all who remain close in our hearts and commemorate in a special way, our parishioners who passed into eternal life during 2020.

THANKSGIVING COLLECTION

The money collected during the 6:30 and 9:00 a.m. Masses on Thanksgiving Day, November 26, will benefit the work of the St. Vincent de Paul Society. Your generosity is appreciated.

PRAYER OF THANKSGIVING

Loving God,

We turn our hearts to you on this day, mindful of your many blessings. For each one we are grateful. For each one we are opened to the abundance of your love. On this day may we be generous with others as you are with us. We praise you. We rejoice in you. We give you thanks. Amen.



Livestreaming Mass

Next Sunday, November 29, the 9:00 a.m. Celebration of Mass will be livestreamed and will be available to view on the St. Vincent de Paul Facebook page (<https://www.facebook.com/svcapex/>). The video will also be available to view after Mass on the parish website (www.svcapex.com).

Please Note: The 5:00 p.m. Mass on Saturday, November 28, will not be livestreamed.

Extend mercy towards others, so that there can be no one in need whom you meet without helping.

ST. VINCENT DE PAUL

May They Rest in Peace



Sympathy is extended to the families of:

Joseph Domian, former member of the St. Vincent de Paul Parish;

Sister Marianne Mullen, former member of the St. Vincent de Paul Parish;

William Palmer, father of Bryan Palmer;

Lori Emmons, sister of Micah Emmons; and

James Hahn, a member of the St. Vincent Parish family.

*May they and all the souls of the faithful departed,
through the mercy of God, rest in peace.*

Vincent's Vittles

Vincent Vittles has resumed and will be serving a meal this month! It will not be a sit-down meal but will be served in a drive-by and carryout fashion. The meal will be served the last Saturday of this month, November 28, and meals may be picked up from 4:30 to 6:30 p.m. Please contact Deacon Mark if you would like to help with this meals.

Please do not park in front of the Church during the 5:00 p.m. Mass on Saturday, November 28, allowing easy access to Vincent's Vittles curbside pickup.

National #iGiveCatholic on Tuesday, December 1

Tuesday, December 1, is the #iGiveCatholic Day of Giving. Parishioners are asked to assist the parish in this season of Thanksgiving. Please also consider looking for and assisting an additional parish or organization which has needs. Advance giving is underway now if you want to make a donation early. The minimum gift is \$25.

Gifts are by credit card and can be made anonymously if you wish. Keep in mind that all donations will have a transaction fee. The amount of the fee is dependent upon the amount of the donation. Donors have the **option** to cover these fees at the time of donation, and they will receive a tax deduction on the full donation amount.

Go to <https://springfieldcgc.igivecatholic.org/organizations/st-vincent-de-paul-parish-cape-girardeau>. Money collected for St. Vincent will go to help those in need especially with food, clothing and toiletries. Thank you!



NDRHS Open House

Who we are is defined by what we do. Since 1925, Notre Dame Regional High School has educated young men and women from Southeast Missouri and Southern Illinois to be service-minded individuals who have become engaged leaders and active members of their communities. NDRHS believes in an education that challenges the mind, body and spirit.

In Notre Dame's faith life, on the field, and in the classroom, they go the distance to ensure that students have a healthy, happy and well-rounded high school experience. With top-rated programs for spiritual formation, in academics, in athletics, in performing arts, and in service to the community, Notre Dame offers students a wealth of opportunities to learn, share and grow. Enthusiastic teachers, coaches, staff, students, and alumni invite you to discover for yourself what makes Notre Dame the perfect choice for your family.

You are invited to learn more about NDRHS by attending the open houses on December 1, 2020 at 6:00 p.m. Seating is limited and a livestream option via Zoom will be offered. You can reserve your spot online at notredamehighschool.org/openhouse.

• The Week Ahead •

Monday, November 23

8:00 am Confirmation Prep (SVS)

8:00 am Ugly Quilt Ministry
(8:00 - 11:00 am)

Tuesday, November 24

8:00 am Confirmation Prep (SVS)

6:00 pm Tuesday Evening Bible Study

Wednesday, November 25

9:00 am Wednesday Morning Bible Study

3:00 pm Divine Mercy Holy Hour

Thursday, November 26

Happy Thanksgiving

Friday, November 27

Saturday, November 28

3:30 pm Reconciliation

Sunday, November 29

Advent Begins



**The Parish Office will be closed
Thursday, November 26 and
Friday, November 27
in observance of Thanksgiving.**

**Congratulations to
Larry and Mary Ellen Mohundro
as they celebrate their
50th Wedding Anniversary
on November 28!**

Readings - November 29, 2020

Isaiah 63:16b-17, 19b; 64:2-7
1 Corinthians 1:3-9 • Mark 13:33-37

Collection - November 15, 2020

Collection	\$ 9,877.80
E-Tithing	\$ 472.00
Total	\$10,349.80
Weekly Budget	\$31,450.00
Year-to-date Difference	-\$68,585.22

**Thank you for being good
stewards of God's gifts!**

• Contact Information •

Parish Office

contactus@svparish.com / 573-335-7667

Father Rick Jones, Pastor

Stvcapepadre@gmail.com / 573-335-7667

Father Brian Straus

Associate Pastor/ Chaplain of NDRHS

fatherbrian@svparish.com / 573-335-7667

Deacon Robbie Huff

Superintendent of Schools

Diocese of Springfield-Cape Girardeau

robhuff@svparish.com / 573-335-7667

Deacon Mark Kiblinger

Coordinator of Stewardship and RCIA

mkiblinger@svparish.com / 573-335-7667

Deacon Thomas Schumer

Director of CCM, SEMO University

deacontom@ccmin.org / 573-335-7667

Kelli Foster

Social Media Coordinator

kcefooster@gmail.com / 573-433-4703

Kay Glastetter

Principal of St. Vincent DePaul Grade School

kglastetter@svcape.eduk12.net / 573-334-9594

Kathy Hotop Raines

Director of Religious Education

kraines@svcape.eduk12.net / 573-335-7667

Rose Huff

Bulletin Editor/Administrative Assistant

rhuff@svparish.com / 573-335-7667

Lenny Kuper, Music Coordinator

lennykuper@notredamecape.org

573-335-7667

Jeffrey Lloyd, Maintenance Supervisor

jllloyd@svparish.com / 573-335-7667

Beverly McMeel

Accounting Clerk/Administrative Assistant

bmcmeel@svparish.com / 573-335-7667

Cheryl Oberhaus, Director of Parish Finance

coberhaus@svparish.com / 573-335-7667

Debbie Wells, Receptionist

dwells@svparish.com / 573-335-7667

Maxine's Shareable Wearables

Maxine's, St. Vincent's clothing ministry, is gradually getting back to pre-Covid days. In October, clothing was given to 158 people and many donations have come in. There are still a few items that are needed: men's shoes (size 10 and up), belts, XL winter coats, fleece hoodies, sweatpants, and also girls' size 7/8 winter tops. If you can donate any of these items, they can be brought to Maxine's (basement of old convent) any Thursday, 9:00 - 11:00 a.m., or Saturday, 9:00 - 12:00 noon. Please do not bring summer clothing. Maxine's will be closed all of Thanksgiving week. Saturday volunteers are still needed! Thanks!

Substitute Teachers Needed

St. Vincent de Paul Elementary School is in need of substitute teachers. To be a substitute teacher, you will need to have 60 college credit hours and a positive attitude! If interested, please call the school office at 573-334-9594.

Now Accepting Applications for Totus Tuus Missionaries

Totus Tuus (Totally Yours) is a summer Catholic youth program dedicated to sharing the Gospel and promoting the Catholic faith. Missionary teams, built of young college age adults, will travel to various parishes throughout the summer and lead a week filled with music, prayer, catechetical lessons, games, skits, and more. Young dynamic Catholic adults (ages 18-25) who are ready to share their love for Jesus and his Church with youth of the diocese are being hired! Applicants must have an authentic faith and be actively living the teachings of the Catholic Church. One year of college or work experience is preferred, but mature graduating high school seniors will be considered. No major or area of study is required. This is a great summer job experience for anyone who wants to work in ministry, education or with children in any setting.

For more information or to apply to be a Missionary, visit the Totus Tuus page at dioscg.org/totustuus/. You may also contact the Office of Evangelization, Catechesis and Youth Formation at 417-866-0841 or email Lynn Melendez, Director, at lmelendez@dioscg.org.

Thank You to ...

Parish Council Members for Your Service to the Parish

On behalf of the parish, as Pastor, I want to thank Mike Himmelberg, Ann Hayes, and Kelli Foster for having completed their time on the Parish Council. Their giftedness has been a blessing for our parish and our families here at St. Vincent. Thank you also goes to the new members who have discerned on the Parish Council: Carol Drummond, Michelle Prost, and Kevin Seabaugh who are beginning three year terms. Also, thank you to continuing Parish Council members: Nick Hogan, Mike Delgado, Bob Janota, Chris Martin, Tedd Powers (chair), and Hugh Protzel. If you have concerns regarding our parish, please feel free to approach any of these Parish Council members.

School Board Members for Your Service to St. Vincent de Paul Elementary School

On behalf of the parish, I want to thank Jason Patomson, Spencer Schoch, and Stephanie Galati for having completed their time on the School Board for St. Vincent de Paul Elementary School. Their giftedness has been a blessing for our parish, our school, our students, and our school families. Thank you to the new members who are beginning three year terms on the School Board: Brad Burdick, Caroline Holiman, and Matt Wengert. Thanks also to continuing School Board members: Angie Alford (chair), Jamie Jackson, and Jeanne Harris.

Father Rick

Discipleship Corner

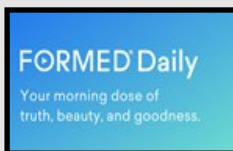
Advent Begins in One Week!

What can you do to make December more prayerful and less stressful? Spend just a few minutes with Jesus each day! Here are a few **great options** – each one delivers a daily email with a reflection on the daily gospel or one of the daily readings. *Which option will you choose?*



Dynamic Catholic: A daily email from **Matthew Kelly** who provides a short video reflection on the daily Gospel. If you have never done a **Dynamic Catholic Best Advent Ever** program, give it a try! You will love Matthew Kelly's style. Sign up at <https://dynamiccatholic.com>.

Formed Daily: A daily email with a four minute video from **Tim Gray**, director of the Augustine Institute. Tim is a master at bringing clarity to any scripture passage, giving you background, and tying the Old Testament with the New. Sign up at <https://formed.org/daily>.



Word on Fire: A daily email from **Bishop Robert Barron**, director of the Word on Fire Institute, provides a short but insightful narrative on the daily Gospel reading. Bishop Barron is direct, to the point and gives you new perspectives from which to understand scripture. Sign up at <https://dailycatholicgospel.com>.

Faith Direct

Please remember that St. Vincent Parish's main source of income, the Sunday collection, is taking place in a limited way. If you have signed up for Faith Direct, thank you! Faith Direct allows you to support St. Vincent de Paul Parish using electronic funds transfer from a bank account or credit/debit card. It is simple, safe and convenient. You can begin supporting St. Vincent electronically today by visiting **faith.direct/MO885**. If you do not want to use this option, feel free to mail in your Sunday donation or drop it in the designated containers at weekend Masses. **As always, thank you for your contributions!**

Survey for Lay Ecclesial Ministers

The United States Conference of Catholic Bishops would like to learn more about the realities facing lay ecclesial ministers across the country.

To achieve that, the USCCB has created a survey that any and all lay leaders are invited to fill out to get a snapshot of the current landscape of lay ecclesial ministry in the Church in the U.S. today; to hear how the pandemic has affected them; to understand the impact of the bishops' document on lay ecclesial ministry, *Co-Workers in the Vineyard of the Lord*; and to ask how the USCCB can support and advocate for lay ecclesial ministers throughout the United States, most especially at this uncertain time.

The deadline for filling out the survey is December 15, 2020. To take the survey, go to the St. Vincent Parish website (www.svcape.com) and find the direct link to the survey.



Follow St. Vincent and stay up to date!

Find St. Vincent on Facebook at <https://www.facebook.com/svcape/>

Find St. Vincent on Instagram at [stvincentcapedgirardeau](https://www.instagram.com/stvincentcapedgirardeau)

Welcome to St. Vincent de Paul

If you would like to register for the parish, change your address, or simply have questions, please fill out the form and place it in the collection basket. You may also mail it to the parish office at 1913 Ritter Drive, Cape Girardeau, MO 63701. Please free to contact parish office staff anytime during regular office hours, 8:00 a.m. - 4:30 p.m. You may email the parish office at contactus@svparish or call 335-7667. A parish registration form is available at <http://www.svcape.com/Parish/>.

Name _____

Address _____

Email _____ Phone _____

- ☐ I am new to Cape Girardeau. ☐ I am new to St. Vincent de Paul Parish.
- ☐ I have been attending St. Vincent Parish and would like to register as a member.
- ☐ Please change my address to the one shown above.
- ☐ I would like to sign up for Faith Direct.
- ☐ I would like to learn more about the Catholic faith.
- ☐ I would like to register my child/children for Parish School of Religion.

First Reading

Ezekiel 34:11-12, 15-17

Thus says the LORD GOD: I myself will look after and tend my sheep. As a shepherd tends his flock when he finds himself among his scattered sheep, so will I tend my sheep.

I will rescue them from every place where they were scattered when it was cloudy and dark.

I myself will pasture my sheep; I myself will give them rest, says the LORD GOD. The lost I will seek out, the strayed I will bring back, the injured I will bind up, the sick I will heal, but the sleek and the strong I will destroy, shepherding them rightly.

As for you, my sheep, says the LORD GOD, I will judge between one sheep and another, between rams and goats.

Responsorial Psalm

My shepherd is the Lord,
nothing indeed shall I want.

Second Reading

1 Corinthians 15:20-26, 28

Brothers and sisters:
Christ has been raised from the dead, the firstfruits of those who have fallen asleep. For since death came through man, the resurrection of the dead came also through man.

For just as in Adam all die, so too in Christ shall all be brought to life, but each one in proper order: Christ the firstfruits; then, at his coming, those who belong to Christ; then comes the end, when he hands over the kingdom to his God and Father, when he has destroyed every sovereignty and every authority and power. For he must reign until he has put all his enemies under his feet. The last enemy to be destroyed is death. When everything is subjected to him, then the Son himself will also be subjected to the one who subjected everything to him, so that God may be all in all.

Gathering

1. Crown him with man - y crowns, The Lamb up - on his
2. Crown him the Lord of life, Who tri - umphed o'er the
3. Crown him the Lord of love— Be - hold his hands and
4. Crown him the Lord of peace, Whose power a scep - ter
5. Crown him the Lord of years, The mas - ter of all

throne. Hark! How the heav'n - ly an - them drowns All
grave, And rose vic - to - rious in the strife For
side, Rich wounds, yet vis - i - ble a - bove, In
sways From pole to pole, that wars may cease, Ab -
time, Cre - a - tor of the roll - ing spheres, And

mu - sic but its own. A - wake, my soul, and sing Of
those he came to save. His glo - ries now we sing, Who
beau - ty glo - ri - fied. No an - gel in the sky Can
sorbed by prayer and praise. His reign shall know no end, And
ris - en Lord sub - lime. All hail, Re - deem - er, hail! For

him who set us free, And hail him as your
died and rose on high, Who died, e - ter - nal
ful - ly bear that sight, But down - ward bends his
round his pierc - ed feet Fair flow'rs of par - a -
you have died for me; Your praise and glo - ry

heav'n - ly King Through all e - ter - ni - ty.
life to bring, And lives that death may die.
burn - ing eye At mys - ter - ies so bright.
dise ex - tend Their fra - grance ev - er sweet.
shall not fail Through - out e - ter - ni - ty.

Text: Revelation 19:12; st. 1, 3-5, Matthew Bridges, 1800-1894; st. 2, Godfrey Thring, 1823-1903
Tune: DIADEMATA, SMD; George J. Elvey, 1816-1893

Refrain

Gloria

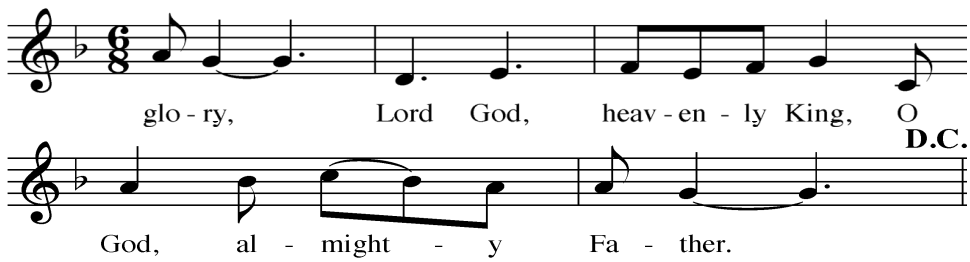
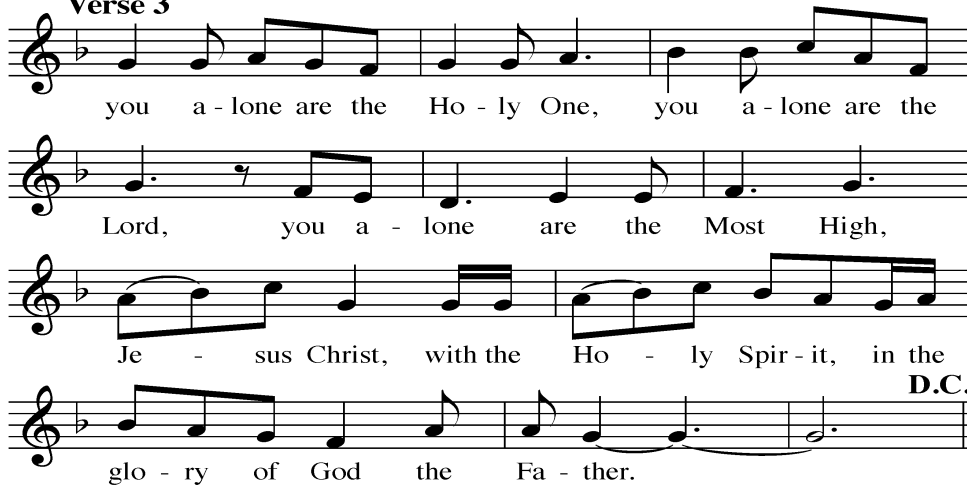
Glo - ry to God in the high - est, and on

earth peace to peo - ple of good will. 1. We
2. 7
3. For

Verse 1

praise you, we bless you, we a - dore you, we

glo - ri - fy you, we give you thanks for your great

**Verse 2****Verse 3****♠ Coda***Gospel Reading***Matthew 25:31-46**

Jesus said to his disciples:

“When the Son of Man comes in his glory, and all the angels with him, he will sit upon his glorious throne, and all the nations will be assembled before him.

And he will separate them one from another, as a shepherd separates the sheep from the goats.

He will place the sheep on his right and the goats on his left.

Then the king will say to those on his right, ‘Come, you who are blessed by my Father. Inherit the kingdom prepared for you from the foundation of the world.

For I was hungry and you gave me food, I was thirsty and you gave me drink, a stranger and you welcomed me, naked and you clothed me, ill and you cared for me, in prison and you visited me.’

Then the righteous will answer him and say, ‘Lord, when did we see you hungry and feed you, or thirsty and give you drink? When did we see you a stranger and welcome you, or naked and clothe you?

When did we see you ill or in prison, and visit you?’

And the king will say to them in reply, ‘Amen, I say to you, whatever you did for one of the least brothers of mine, you did for me.’

Then he will say to those on his left, ‘Depart from me, you accursed, into the eternal fire prepared for the devil and his angels.

For I was hungry and you gave me no food, I was thirsty and you gave me no drink, a stranger and you gave me no welcome, naked and you gave me no clothing, ill and in prison, and you did not care for me.’

Then they will answer and say, ‘Lord, when did we see you hungry or thirsty or a stranger or naked or ill or in prison, and not minister to your needs?’

He will answer them, ‘Amen, I say to you, what you did not do for one of these least ones, you did not do for me.’

And these will go off to eternal punishment, but the righteous to eternal life.”

The Nicene Creed

I believe in one God,
the Father almighty,
maker of heaven and earth,
of all things visible and invisible.
I believe in one Lord Jesus Christ,
the Only Begotten Son of God,
born of the Father before all ages.
God from God, Light from Light,
true God from true God,
begotten, not made,
consubstantial with the Father;
through him all things were made.
For us men and for our salvation
he came down from heaven,
and by the Holy Spirit
was incarnate of the Virgin Mary,
and became man.

For our sake he was crucified
under Pontius Pilate,
he suffered death and was buried,
and rose again on the third day
in accordance with the Scriptures.
He ascended into heaven
and is seated at the right hand
of the Father.

He will come again in glory
to judge the living and the dead
and his kingdom will have no end.

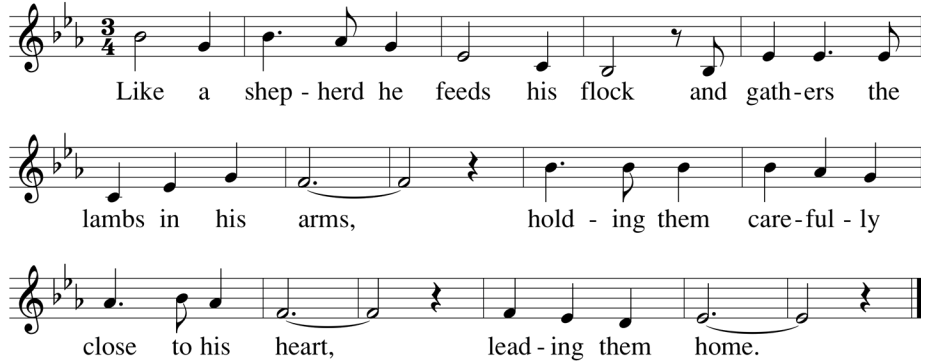
I believe in the Holy Spirit,
the Lord, the giver of life,
who proceeds
from the Father and the Son,
who with the Father and the Son
is adored and glorified,
who has spoken through the prophets.

I believe in one, holy, catholic
and apostolic Church.
I confess one Baptism
for the forgiveness of sins
and I look forward to the
resurrection of the dead
and the life of the world to come.
Amen.

Communion

Like a Shepherd

Refrain



Like a shep - herd he feeds his flock and gath - ers the
lambs in his arms, hold - ing them care - ful - ly
close to his heart, lead - ing them home.

Verses 1, 2



1. Say to the cit - ies of Ju - dah: Pre - pare the
2. I my - self will shep - herd them, for oth - ers have
way of the Lord. Go to the moun - tain top,
led them a - stray. The lost I will res - cue and
lift your voice; Je - ru - sa - lem, here is your God.
heal their wounds and pas - ture them, giv - ing them rest.

Verse 3



3. Come un - to me if you are
heav - i - ly bur - dened, and take my yoke up -
on your shoul - ders, I will give you rest.

Text: Isaiah 40:9ff, Ezekiel 34:11, Matthew 11:28ff; Bob Dufford, SJ, b.1943
Tune: Bob Dufford, SJ, b.1943; acc. by Sr. Theophane Hytrek, OSF, 1915-1992, alt.
© 1976, Robert J. Dufford, SJ, and OCP

Communion

Sanctuary

Congregation: (sing twice)

Lord, pre - pare me to be a sanc-tu - ar - y, pure and
ho - ly, tried and true; with thanks-giv-ing, I'll be a

Additional Words and Arrangement by LLOYD LARSON, Words and Music by JOHN THOMPSON and RANDY SCRUGGS
© 1983 and this Arr. © 2020 Whole Armor Publishing Company and Full Armor Publishing Company,
All rights in the U.S. administered by Peermusic III, Ltd.
International copyright secured. All rights reserved. Used by permission., Reprinted by permission of Hal Leonard LLC.
Sole Selling Agent for this 2020 Arrangement: Hope Publishing Company, Carol Stream, IL 60188,
www.hopepublishing.com., 800-323-1049

The Publisher grants permission to reproduce this page for Congregational singing.

Recessional

To Jesus Christ Our Sovereign King

1. To Je - sus Christ, our sov - 'reign King, Who
2. Your reign ex - tend, O King be - nign, To
3. To you and to your Church, great King, We

is the world's sal - va - tion, All praise and hom - age
ev - 'ry land and na - tion; For in your king - dom,
pledge our hearts' ob - la - tion Un - til be - fore your

do we bring And thanks and ad - o - ra - tion.
Lord di - vine, A - lone we find sal - va - tion.
throne we sing In end - less ju - bi - la - tion.

Christ Je - sus, Vic - tor! Christ Je - sus, Ru - ler!

Christ Je - sus, Lord and Re - deem - er!

Text: Martin B. Hellriegel, 1890-1981, alt., © 1941, Irene C. Mueller
Tune: ICH GLAUB AN GOTT, 8 7 8 7 with refrain; Mainz Gesangbuch, 1870; harm. by Richard Proulx, 1937-2010

Celebrating the Sacraments Celebrando los Sacramentos

Marriage: Please contact the parish office at least **six months** in advance. (If you have been married before, an annulment may need to be done first.)

Matrimonio: Por favor comuníquese con la oficina parroquial por lo menos con **seis meses** de antelación. (Si usted ha estado casado antes, una anulación del matrimonio puede necesitar ser hecha primero.)

...

Baptism: Your family needs to be registered in the parish for three months prior to the baptism. It is necessary to schedule baptismal preparation classes six weeks prior to your child's baptism. Taking the baptism class prior to birth is encouraged! Contact Deacon Mark Kiblinger at the parish office (573-335-7667).

Bautismo: Es un requisito ser inscritos en la parroquia por lo menos 3 meses antes de bautizar. También los padres tienen que celebrar la santa misa cada fin de semana. La clase de preparación para el bautismo para padres y padrinos es cada último lunes del mes. Favor de comunicarse con Padre Rick una semana antes al 573-335-7667.

...

Holy Orders and Consecrated Religious Life: Would you like to talk about how to be a Priest, Permanent Deacon, Religious Brother or Religious Sister? Come to a gathering on the last Thursday of each month for snacks and discussion about this way of life. For more information, call Father Rick at the parish office (573-335-7667) or email him at stvcapadre@gmail.com.

Orden Sagrado y vida religiosa consagrada: ¿te gustaría hablar de cómo ser sacerdote, diácono permanente, hermano religioso o hermana religiosa? Ven a una reunión el último Jueves de cada mes para algunos bocadillos y discusión sobre esta forma de vida. Para más información, llame al Padre Rick en la oficina parroquial (573-335-7667) o stvcapadre@gmail.com.

...

Anointing of the Sick: If you are going to the hospital for a planned surgery, please call the parish office so this Sacrament can be celebrated with you.

Unción de los enfermos: Si usted va al hospital para una cirugía planificada, por favor llame a la oficina parroquial para que este Sacramento pueda ser celebrado con usted.

<div>Room Mates</div> <div>POOL & SPA</div> <div>358 South Kingshighway Cape Girardeau, MO 573-335-4673</div>	<div></div> <div>Ahrens Appraisal Service</div> <div>Phone (573) 335-4102</div>	<div></div> <div>Nip Kelley Equipment Company</div> <div>41 NORTH SPRIGG CAPE GIRARDEAU, MO OFFICE 573-334-0554 FAX 573-334-2025</div>	<div>GLAUS & ASSOCIATES</div> <div>CPA</div> <div>C.P.A., L.L.C.</div> <div>2855 Independence Cape Girardeau, MO 63703 PHONE: 573-334-8474</div>	<div>New Expanded Hours!</div> <div></div> <div>HUDSON CHIROPRACTIC</div> <div>573.335.7349</div> <div>3232 Independence Street</div>	<div>BEUSSINK, HEY & ROE, P.C.</div> <div>Certified Public Accountants</div> <div>16 S. Silver Springs Road Cape Girardeau, MO 63703 (573) 334-4988</div>
<div></div> <div>Dr. Stan Williams</div> <div>doctor of dental surgery</div> <div>573-335-0700</div>	<div></div> <div>DQ Grill & Chill</div>	<div></div> <div>River Eagle Distributing</div> <div>Cape Girardeau, MO</div>	<div>KEN'S Cape Cleaners</div> <div>ONE DAY SERVICE</div> <div>Drive Thru</div> <div>WE DO IT ALL AND WE DO IT RIGHT</div> <div>334-1070 • 2591 INDEPENDENCE</div>	<div>Accu-Grow</div> <div>Lawn & Tree Care</div> <div>Lawn Fertilization • Weed Control</div> <div>573-335-5355 • 800-757-5355</div>	<div>PEST FREE</div> <div>573-243-4622</div> <div>Serving S.E.M.O. for over 40 years</div>
<div></div> <div>ADRIENNE POE</div> <div>Executive Broker</div> <div>450.9965</div> <div>REALTY EXECUTIVES</div> <div>573.335.8111 www.CapeAreaHomes.com</div>	<div></div> <div>Ford GROVES</div> <div>Cape 335-2600 Jackson 243-1426 www.fordgroves.com</div>	<div>DSW SIGNS</div> <div>www.dswsigns.com</div>	<div>KEN'S Cape Cleaners</div> <div>ONE DAY SERVICE</div> <div>Drive Thru</div> <div>WE DO IT ALL AND WE DO IT RIGHT</div> <div>334-1070 • 2591 INDEPENDENCE</div>	<div>Accu-Grow</div> <div>Lawn & Tree Care</div> <div>Lawn Fertilization • Weed Control</div> <div>573-335-5355 • 800-757-5355</div>	<div>MoleMan</div> <div>Season-long control of moles</div> <div>Guaranteed results</div> <div>573-334-1919 • 1-888-826-1919</div>
<div></div> <div>Murphy</div> <div>BUSINESS SALES</div> <div>573.335.1885</div> <div>MurphyBusinessofCape.com</div>	<div></div> <div>Dutch ENTERPRISES</div> <div>PLUMBING • HEATING • COOLING</div> <div>After Hours Service!</div> <div>573.243.3193</div> <div>dutchenterprises.com</div>	<div></div> <div>INNOVATIVE Orthodontics</div> <div>SETTIN' TEETH STRAIGHT</div> <div>573.332.7223</div> <div>Terry Spence D.D.S., M.D.S. 2103 Broadway Cape Girardeau, MO 63701</div>	<div>CUBA FINANCIAL GROUP</div> <div>Redefining Wealth Management</div> <div>Richard R. Cuba, CFP®, CWS® Tyler H. Cuba, CWS® Paul Mills, MBA Abby Popp 573-334-7000 www.cubafinancialgroup.com</div>	<div></div> <div>KOHLFELD COMPANIES</div> <div>CAPE GIRARDEAU • POPLAR BLUFF</div> <div> </div>	
<div></div> <div>RICHARDS LAND SURVEYING</div> <div>573-339-7473</div> <div>RLSurvey@charter.net</div>	<div></div> <div>Dutch ENTERPRISES</div> <div>PLUMBING • HEATING • COOLING</div> <div>After Hours Service!</div> <div>573.243.3193</div> <div>dutchenterprises.com</div>	<div></div> <div>INNOVATIVE Orthodontics</div> <div>SETTIN' TEETH STRAIGHT</div> <div>573.332.7223</div> <div>Terry Spence D.D.S., M.D.S. 2103 Broadway Cape Girardeau, MO 63701</div>	<div>CUBA FINANCIAL GROUP</div> <div>Redefining Wealth Management</div> <div>Richard R. Cuba, CFP®, CWS® Tyler H. Cuba, CWS® Paul Mills, MBA Abby Popp 573-334-7000 www.cubafinancialgroup.com</div>	<div></div> <div>KOHLFELD COMPANIES</div> <div>CAPE GIRARDEAU • POPLAR BLUFF</div> <div> </div>	
<div></div> <div>BROST & ASSOCIATES</div> <div>FAMILY EYE CARE, P.C.</div> <div>Kyle E. Brost, O.D.</div> <div>352 S. Broadview St. • Cape Girardeau 573-334-8595 • www.brostassociates.com</div>	<div></div> <div>Dutch ENTERPRISES</div> <div>PLUMBING • HEATING • COOLING</div> <div>After Hours Service!</div> <div>573.243.3193</div> <div>dutchenterprises.com</div>	<div></div> <div>INNOVATIVE Orthodontics</div> <div>SETTIN' TEETH STRAIGHT</div> <div>573.332.7223</div> <div>Terry Spence D.D.S., M.D.S. 2103 Broadway Cape Girardeau, MO 63701</div>	<div>CUBA FINANCIAL GROUP</div> <div>Redefining Wealth Management</div> <div>Richard R. Cuba, CFP®, CWS® Tyler H. Cuba, CWS® Paul Mills, MBA Abby Popp 573-334-7000 www.cubafinancialgroup.com</div>	<div></div> <div>KOHLFELD COMPANIES</div> <div>CAPE GIRARDEAU • POPLAR BLUFF</div> <div> </div>	
<div></div> <div>COLUMBIA</div> <div>CONSTRUCTION & CASEWORK</div> <div>Cape Girardeau, MO 573-335-6443 www.columbiaconst.com</div>	<div></div> <div>Dutch ENTERPRISES</div> <div>PLUMBING • HEATING • COOLING</div> <div>After Hours Service!</div> <div>573.243.3193</div> <div>dutchenterprises.com</div>	<div></div> <div>INNOVATIVE Orthodontics</div> <div>SETTIN' TEETH STRAIGHT</div> <div>573.332.7223</div> <div>Terry Spence D.D.S., M.D.S. 2103 Broadway Cape Girardeau, MO 63701</div>	<div>CUBA FINANCIAL GROUP</div> <div>Redefining Wealth Management</div> <div>Richard R. Cuba, CFP®, CWS® Tyler H. Cuba, CWS® Paul Mills, MBA Abby Popp 573-334-7000 www.cubafinancialgroup.com</div>	<div></div> <div>KOHLFELD COMPANIES</div> <div>CAPE GIRARDEAU • POPLAR BLUFF</div> <div> </div>	
<div></div> <div>PATRICK FURNITURE</div> <div>1140 N. KINGSHIGHWAY • CAPE GIRARDEAU, MO</div>	<div></div> <div>Dutch ENTERPRISES</div> <div>PLUMBING • HEATING • COOLING</div> <div>After Hours Service!</div> <div>573.243.3193</div> <div>dutchenterprises.com</div>	<div></div> <div>INNOVATIVE Orthodontics</div> <div>SETTIN' TEETH STRAIGHT</div> <div>573.332.7223</div> <div>Terry Spence D.D.S., M.D.S. 2103 Broadway Cape Girardeau, MO 63701</div>	<div>CUBA FINANCIAL GROUP</div> <div>Redefining Wealth Management</div> <div>Richard R. Cuba, CFP®, CWS® Tyler H. Cuba, CWS® Paul Mills, MBA Abby Popp 573-334-7000 www.cubafinancialgroup.com</div>	<div></div> <div>KOHLFELD COMPANIES</div> <div>CAPE GIRARDEAU • POPLAR BLUFF</div> <div> </div>	
<div></div> <div>cpu</div> <div>Payroll IT Solutions Voice</div> <div>573-334-2420 www.c-p-u.com</div>	<div></div> <div>Dutch ENTERPRISES</div> <div>PLUMBING • HEATING • COOLING</div> <div>After Hours Service!</div> <div>573.243.3193</div> <div>dutchenterprises.com</div>	<div></div> <div>INNOVATIVE Orthodontics</div> <div>SETTIN' TEETH STRAIGHT</div> <div>573.332.7223</div> <div>Terry Spence D.D.S., M.D.S. 2103 Broadway Cape Girardeau, MO 63701</div>	<div>CUBA FINANCIAL GROUP</div> <div>Redefining Wealth Management</div> <div>Richard R. Cuba, CFP®, CWS® Tyler H. Cuba, CWS® Paul Mills, MBA Abby Popp 573-334-7000 www.cubafinancialgroup.com</div>	<div></div> <div>KOHLFELD COMPANIES</div> <div>CAPE GIRARDEAU • POPLAR BLUFF</div> <div> </div>	
<div></div> <div>Knauf FLORAL FTD</div> <div>838 WILLIAM ST • Cape Girardeau, MO Phone: 334-3029-www.knaupfloral.com</div>	<div></div> <div>Dutch ENTERPRISES</div> <div>PLUMBING • HEATING • COOLING</div> <div>After Hours Service!</div> <div>573.243.3193</div> <div>dutchenterprises.com</div>	<div></div> <div>INNOVATIVE Orthodontics</div> <div>SETTIN' TEETH STRAIGHT</div> <div>573.332.7223</div> <div>Terry Spence D.D.S., M.D.S. 2103 Broadway Cape Girardeau, MO 63701</div>	<div>CUBA FINANCIAL GROUP</div> <div>Redefining Wealth Management</div> <div>Richard R. Cuba, CFP®, CWS® Tyler H. Cuba, CWS® Paul Mills, MBA Abby Popp 573-334-7000 www.cubafinancialgroup.com</div>	<div></div> <div>KOHLFELD COMPANIES</div> <div>CAPE GIRARDEAU • POPLAR BLUFF</div> <div> </div>	
<div></div> <div>FORD & SONS FUNERAL HOME</div> <div>Cape Girardeau • Jackson Benton • Perryville Altenburg 573-334-1313</div>	<div></div> <div>Dutch ENTERPRISES</div> <div>PLUMBING • HEATING • COOLING</div> <div>After Hours Service!</div> <div>573.243.3193</div> <div>dutchenterprises.com</div>	<div></div> <div>INNOVATIVE Orthodontics</div> <div>SETTIN' TEETH STRAIGHT</div> <div>573.332.7223</div> <div>Terry Spence D.D.S., M.D.S. 2103 Broadway Cape Girardeau, MO 63701</div>	<div>CUBA FINANCIAL GROUP</div> <div>Redefining Wealth Management</div> <div>Richard R. Cuba, CFP®, CWS® Tyler H. Cuba, CWS® Paul Mills, MBA Abby Popp 573-334-7000 www.cubafinancialgroup.com</div>	<div></div> <div>KOHLFELD COMPANIES</div> <div>CAPE GIRARDEAU • POPLAR BLUFF</div> <div> </div>	
<div></div> <div>RHODES</div>	<div></div> <div>Dutch ENTERPRISES</div> <div>PLUMBING • HEATING • COOLING</div> <div>After Hours Service!</div> <div>573.243.3193</div> <div>dutchenterprises.com</div>	<div></div> <div>INNOVATIVE Orthodontics</div> <div>SETTIN' TEETH STRAIGHT</div> <div>573.332.7223</div> <div>Terry Spence D.D.S., M.D.S. 2103 Broadway Cape Girardeau, MO 63701</div>	<div>CUBA FINANCIAL GROUP</div> <div>Redefining Wealth Management</div> <div>Richard R. Cuba, CFP®, CWS® Tyler H. Cuba, CWS® Paul Mills, MBA Abby Popp 573-334-7000 www.cubafinancialgroup.com</div>	<div></div> <div>KOHLFELD COMPANIES</div> <div>CAPE GIRARDEAU • POPLAR BLUFF</div> <div> </div>	
<div></div> <div>ADVANCED TRAINING AND REHAB</div> <div>Physical Therapy and Sports Specific Fitness Training</div> <div>Andrew Buelow, DPT 106 S. Farrar Dr. Cape Girardeau, MO 63701 573-319-1600</div>	<div></div> <div>Dutch ENTERPRISES</div> <div>PLUMBING • HEATING • COOLING</div> <div>After Hours Service!</div> <div>573.243.3193</div> <div>dutchenterprises.com</div>	<div></div> <div>INNOVATIVE Orthodontics</div> <div>SETTIN' TEETH STRAIGHT</div> <div>573.332.7223</div> <div>Terry Spence D.D.S., M.D.S. 2103 Broadway Cape Girardeau, MO 63701</div>	<div>CUBA FINANCIAL GROUP</div> <div>Redefining Wealth Management</div> <div>Richard R. Cuba, CFP®, CWS® Tyler H. Cuba, CWS® Paul Mills, MBA Abby Popp 573-334-7000 www.cubafinancialgroup.com</div>	<div></div> <div>KOHLFELD COMPANIES</div> <div>CAPE GIRARDEAU • POPLAR BLUFF</div> <div> </div>	
<div></div> <div>COAD</div> <div>FAMILY OF DEALERSHIPS</div> <div>www.coadfamilyofdealerships.com</div>	<div></div> <div>Dutch ENTERPRISES</div> <div>PLUMBING • HEATING • COOLING</div> <div>After Hours Service!</div> <div>573.243.3193</div> <div>dutchenterprises.com</div>	<div></div> <div>INNOVATIVE Orthodontics</div> <div>SETTIN' TEETH STRAIGHT</div> <div>573.332.7223</div> <div>Terry Spence D.D.S., M.D.S. 2103 Broadway Cape Girardeau, MO 63701</div>	<div>CUBA FINANCIAL GROUP</div> <div>Redefining Wealth Management</div> <div>Richard R. Cuba, CFP®, CWS® Tyler H. Cuba, CWS® Paul Mills, MBA Abby Popp 573-334-7000 www.cubafinancialgroup.com</div>	<div></div> <div>KOHLFELD COMPANIES</div> <div>CAPE GIRARDEAU • POPLAR BLUFF</div> <div> </div>	
<div></div> <div>LUNDY</div> <div>HEATING & COOLING</div> <div>Mark Lundy 573-334-6274 573-768-0342 300 Plazaway Cape Girardeau, MO 63703 mark.lundyhcc@gmail.com</div>	<div></div> <div>Dutch ENTERPRISES</div> <div>PLUMBING • HEATING • COOLING</div> <div>After Hours Service!</div> <div>573.243.3193</div> <div>dutchenterprises.com</div>	<div></div> <div>INNOVATIVE Orthodontics</div> <div>SETTIN' TEETH STRAIGHT</div> <div>573.332.7223</div> <div>Terry Spence D.D.S., M.D.S. 2103 Broadway Cape Girardeau, MO 63701</div>	<div>CUBA FINANCIAL GROUP</div> <div>Redefining Wealth Management</div> <div>Richard R. Cuba, CFP®, CWS® Tyler H. Cuba, CWS® Paul Mills, MBA Abby Popp 573-334-7000 www.cubafinancialgroup.com</div>	<div></div> <div>KOHLFELD COMPANIES</div> <div>CAPE GIRARDEAU • POPLAR BLUFF</div> <div> </div>	
<div></div> <div>Casie Janet-Mills 270-4125 Sarah DeLuca 587-9970</div> <div>Area Properties Real Estate</div> <div>573-803-3353</div>	<div></div> <div>Dutch ENTERPRISES</div> <div>PLUMBING • HEATING • COOLING</div> <div>After Hours Service!</div> <div>573.243.3193</div> <div>dutchenterprises.com</div>	<div></div> <div>INNOVATIVE Orthodontics</div> <div>SETTIN' TEETH STRAIGHT</div> <div>573.332.7223</div> <div>Terry Spence D.D.S., M.D.S. 2103 Broadway Cape Girardeau, MO 63701</div>	<div>CUBA FINANCIAL GROUP</div> <div>Redefining Wealth Management</div> <div>Richard R. Cuba, CFP®, CWS® Tyler H. Cuba, CWS® Paul Mills, MBA Abby Popp 573-334-7000 www.cubafinancialgroup.com</div>	<div></div> <div>KOHLFELD COMPANIES</div> <div>CAPE GIRARDEAU • POPLAR BLUFF</div> <div> </div>	
<div></div> <div>Jack R. Ruopp, D.C. Chiropractor</div> <div>573-335-7349</div>	<div></div> <div>Dutch ENTERPRISES</div> <div>PLUMBING • HEATING • COOLING</div> <div>After Hours Service!</div> <div>573.243.3193</div> <div>dutchenterprises.com</div>	<div></div> <div>INNOVATIVE Orthodontics</div> <div>SETTIN' TEETH STRAIGHT</div> <div>573.332.7223</div> <div>Terry Spence D.D.S., M.D.S. 2103 Broadway Cape Girardeau, MO 63701</div>	<div>CUBA FINANCIAL GROUP</div> <div>Redefining Wealth Management</div> <div>Richard R. Cuba, CFP®, CWS® Tyler H. Cuba, CWS® Paul Mills, MBA Abby Popp 573-334-7000 www.cubafinancialgroup.com</div>	<div></div> <div>KOHLFELD COMPANIES</div> <div>CAPE GIRARDEAU • POPLAR BLUFF</div> <div> </div>	
<div></div> <div>Bard Womack Insurance</div> <div>FARMERS</div> <div>1720 Kingsway Dr., Suite 104 Cape Girardeau, MO • 573-334-2700 Home • Auto • Life • Health • Commercial</div>	<div></div> <div>Dutch ENTERPRISES</div> <div>PLUMBING • HEATING • COOLING</div> <div>After Hours Service!</div> <div>573.243.3193</div> <div>dutchenterprises.com</div>	<div></div> <div>INNOVATIVE Orthodontics</div> <div>SETTIN' TEETH STRAIGHT</div> <div>573.332.7223</div> <div>Terry Spence D.D.S., M.D.S. 2103 Broadway Cape Girardeau, MO 63701</div>	<div>CUBA FINANCIAL GROUP</div> <div>Redefining Wealth Management</div> <div>Richard R. Cuba, CFP®, CWS® Tyler H. Cuba, CWS® Paul Mills, MBA Abby Popp 573-334-7000 www.cubafinancialgroup.com</div>	<div></div> <div>KOHLFELD COMPANIES</div> <div>CAPE GIRARDEAU • POPLAR BLUFF</div> <div> </div>	
<div></div> <div>Pagliai's</div> <div>PIZZA & PASTA</div> <div>1129 Broadway Cape Girardeau, MO 335-0366 or 335-0367</div>	<div></div> <div>Dutch ENTERPRISES</div> <div>PLUMBING • HEATING • COOLING</div> <div>After Hours Service!</div> <div>573.243.3193</div> <div>dutchenterprises.com</div>	<div></div> <div>INNOVATIVE Orthodontics</div> <div>SETTIN' TEETH STRAIGHT</div> <div>573.332.7223</div> <div>Terry Spence D.D.S., M.D.S. 2103 Broadway Cape Girardeau, MO 63701</div>	<div>CUBA FINANCIAL GROUP</div> <div>Redefining Wealth Management</div> <div>Richard R. Cuba, CFP®, CWS® Tyler H. Cuba, CWS® Paul Mills, MBA Abby Popp 573-334-7000 www.cubafinancialgroup.com</div>	<div></div> <div>KOHLFELD COMPANIES</div> <div>CAPE GIRARDEAU • POPLAR BLUFF</div> <div> </div>	