

Extending the Mission

— BUILDING ON THE —
CORNERSTONE OF CHRIST

A RICH HISTORY OF OUR MISSION IN SOUTHEAST MISSOURI

- † We officially became a parish in 1836.
- † In 2026, we will celebrate our 190th anniversary as a parish.
- † The current DePaul Center or “Old Notre Dame” was constructed in 1956 and served as the regional Catholic high school until 1998.
- † Our current church was dedicated on December 8, 1976.
- † We began our campus planning in 2018.

St. Vincent DePaul Catholic Church’s rich history dates to the early days of Cape Girardeau. The parish was founded by the Congregation of the Mission, the formal name of the Vincentian Order. Established by St. Vincent DePaul in France in 1625, their mission was to evangelize the poor and educate the clergy.

We became an official parish on April 9, 1836 with Rev. John Odin, CM, a Vincentian priest, as our first resident pastor. At that time, the parish was located downtown on the banks of the Mississippi River, where the Vincentians began their work of ministering to Catholics in the area. Their work in southeast Missouri was a small part of the pivotal role they played in settling and developing new territories across the United States throughout the 19th century.

A LEGACY OF SERVICE AND VINCENTIAN PRINCIPLES

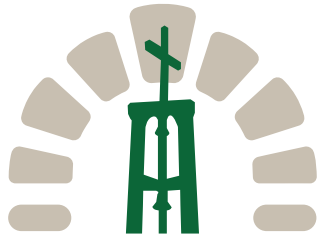


From the beginning, our parish has enjoyed a reputation of being welcoming—and has endeavored to be a generous, faith-filled part of our Cape Girardeau community. In fact, the story of our parish has always included responding to the needs of the local Catholic community as modeled by our patron, St. Vincent DePaul. The first example was construction of the original church building—one of the first west of the Mississippi—in 1838. After a tornado destroyed that church in 1850, our Catholic community rallied together to construct a new church, the beloved Old St. Vincent's—consecrated in the spring of 1851.

For the next 100 years, St. Vincent DePaul Parish helped define Cape Girardeau with Christian principles, expressed in Catholic education, social services, fellowship, and all manner of answering the call to spread the love of Christ through worship, the sacraments, and love for one another. In 1956, responding to the needs of a fast-growing local Catholic community, the parish committed to a significant investment with the move to our current location at Ritter Drive and Forest Avenue. Joining the parish in this move was a new regional Catholic high school—Notre Dame. Meanwhile, the “new” St. Vincent’s launched with construction of a K-8 grade school and Sunday Mass held in the school cafeteria. In 1961, a convent was built for the Loretto Sisters, which currently serves as the parish office.

On December 8, 1976, our current church was dedicated under the patronage of St Vincent DePaul, patron saint of all who work in charity apostolates. The projected costs were estimated at \$625,000 (approx. \$3.5 million in today’s dollars).

Since the 1970s, the parish has completed several updates to the school. While the Vincentians transferred the parish administration to the Diocese of Springfield Cape Girardeau on August 10, 2005, Vincentian principles of discipleship, hospitality, service, and worship still shape who we are today.



Extending the Mission

— BUILDING ON THE —
CORNERSTONE OF CHRIST

FOUNDATIONS OF FELLOWSHIP AND WORSHIP

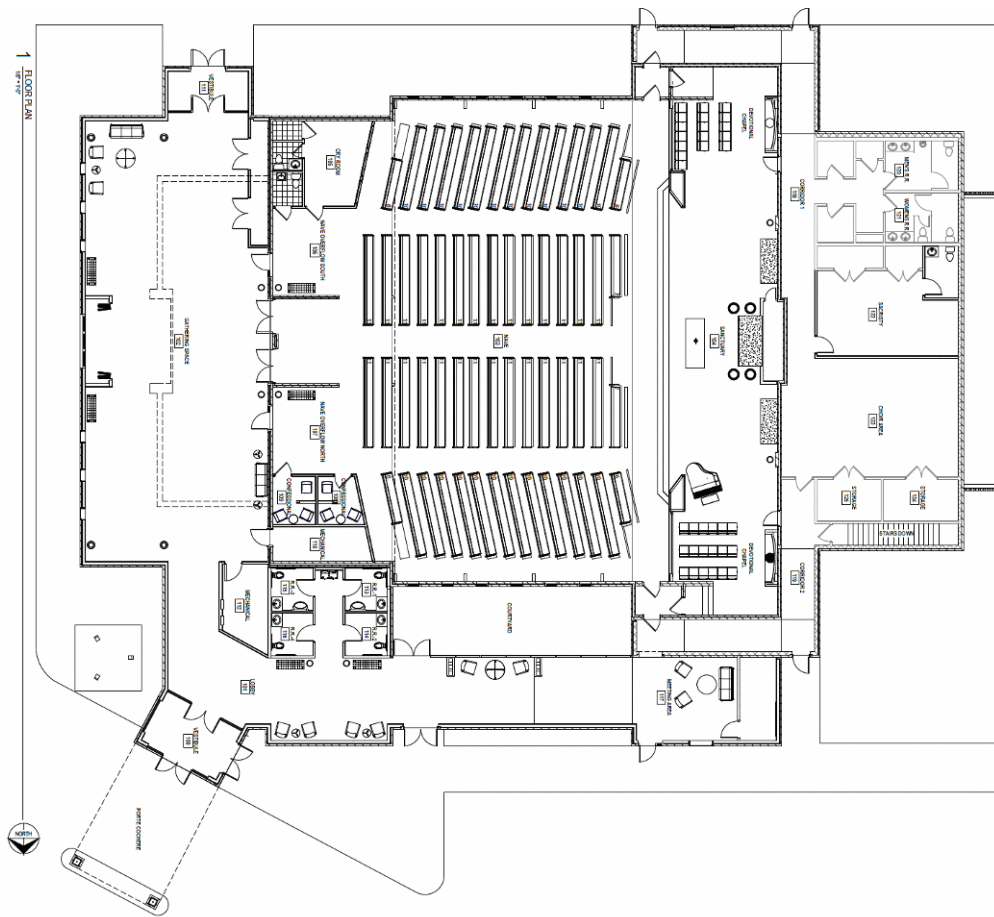
The core parish principles of discipleship, hospitality, service, and worship not only define us, but are also infinitely present in the faithful parishioners who make St. Vincent DePaul their home. Spiritual formation remains central to our parish, both within the Holy Eucharist and the sacraments and outside of worship through many outreach endeavors.

- † The Catholic Church has always offered places where people could gather for worship and fellowship.
- † A gathering space serves as a welcome and first impression to guests and new parishioners.
- † Expanding opportunities for fellowship and hospitality highlight the community aspect of our faith built on the sacraments of Baptism and Reconciliation.
- † Enhancing the solemnity and reverence of our worship space allows the voice of God in sacred silence to be revealed.
- † A gathering space with open doors allows families to unite in joys, hopes, sorrows, and struggles together.
- † Creating a Chapel in honor of the Miraculous Medal honors the Vincentian priests and brothers who sacrificed much for evangelization.
- † Additional updated restrooms will provide adequate and easy access to everyone for making use of these needed facilities.
- † A beautiful All Souls' Chapel in the gathering space allows families to wake their loved one in the Church during a funeral visitation.
- † Plenty of space available in the gathering area ensures time to visit and catch up with others.

A FOUNDATION OF WORSHIP AND ENGAGED FELLOWSHIP

More and more in our chaotic world people want to return to the eternal, the things that really matter. An important aspect of church for many Americans is the idea of fellowship and community. Gathering before and after Mass, attending church-sponsored meals and receptions, and engaging in learning and study sessions all lead us toward these ideals.

The Catholic Church has always offered places where people could gather. In the early church, these places were often in people's own homes. As congregations grew, a church lobby was added, usually to the front of the church worship space. This was commonly called a foyer. In the old days before HVAC and centralized heating, this was often where people would go to warm up by the fireplace. More recently, these foyers were replaced with the gathering spaces we know today. Paradoxically, today's gathering space is still where parishioners go to warm up to one another. This is a different kind of warmth rooted in fellowship and community.



“Historically, our faith has been carried by a spirit of worship and reverence for the sacred combined with the Christ-like joy and love of fellowship and gathering together.”

REVEREND RICK L. JONES, PASTOR

GATHERING SPACE



SANCTUARY



Research indicates that churches built before 1970 have foyers not much bigger than a coat closet. Churches built after 1980 have foyers growing in size. Over time, we've seen churches request lobbies closer to 2:1, and even 1:1, where the gathering space is just as big as the worship space. This change is occurring because the church lobby has a much bigger role to play.

Now, the church gathering space does much more. It offers a first impression for first-time attendees. It's a primary gathering place for attendees and guests, where people get to know each other and share stories. For people who want to hang out, the gathering space must be inviting. This means plenty of comfortable seating, good natural light, and lots of room, so people don't feel pushed out of the space. This is why the gathering space is a place where we grow in being intentional disciples.

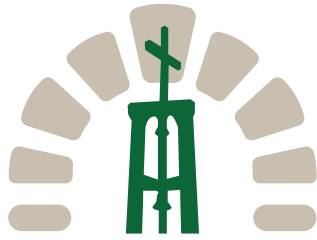
SIDE CHAPEL



NEW ENTRANCE (EXTERIOR VIEW)



The sanctuary updates will be noble and simple; designed to call people to God's Glory. Stained glass, statuary, and Baldacchino will draw attention to the altar where the Sacrifice of the Mass occurs and where the Holy Eucharist is reserved in the tabernacle. A side altar will be installed that is a shrine to the Miraculous Medal. These updates will provide an atmosphere for worship, prayer, and celebration in the place where God meets us every day to give us the gift of Himself, and we say thank you through Mass, adoration, and the sacraments.



Extending the Mission

— BUILDING ON THE —
CORNERSTONE OF CHRIST

† New Life to Old Notre Dame

Our parish campus is overdue for a true Parish Family Center, leading to the creation of a true, relevant, and connected St. Vincent DePaul Parish Campus. We need a Family Event Center for receptions and gatherings, fish fries, bereavement dinners, Knights of Columbus meals, Vincent's Vittles, wedding receptions, St. Gerard Circle activities, PCCW dinners, Baptismal celebrations, liturgical celebrations (Pentecost and Guadalupe), family reunions, and other parish events. Currently, parish events are scattered in several locations, including the current Parish Center in our school and in our Upper and Lower meeting rooms behind the sanctuary. Wedding receptions and other events are often held elsewhere because our spaces cannot always accommodate large groups.

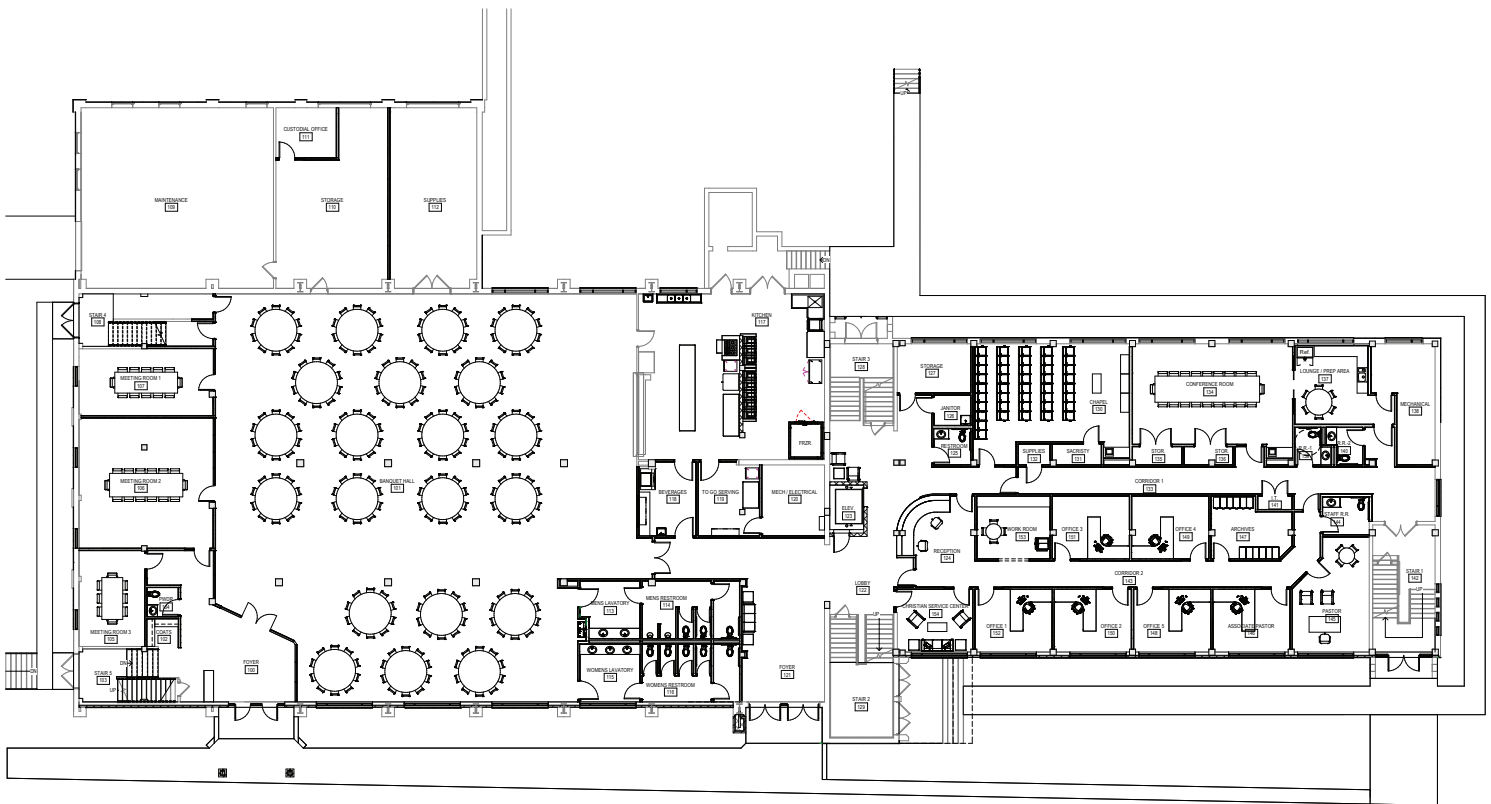
REHAB OF THE DEPAUL CENTER (OLD NOTRE DAME) INTO A COMPLETE PARISH FAMILY CENTER INCLUDES CREATING:

- † Enhanced space for sporting events and gym activities
- † Dedicated space for youth ministry to gather for fellowship and for any other number of youth activities, including for those who share an interest in robotics
- † Dedicated and expanded meeting space for faith formation groups and parish organizations
- † Space for social outreach opportunities such as Ugly Quilts
- † Chapel for Adoration, prayer, and commemoration of the school, Sisters of Notre Dame, and Alumni
- † Larger space for parish offices
- † Storage areas for school and parish
- † New multiuse space for weddings, alumni gatherings, and other social events

As the parish has grown and expanded since the 1970s, our school campus has played a dual role in providing space for high-quality Catholic education, hosting parish social events like fish fries, and meeting space for service and fellowship groups and events. In today's world, school security is a primary concern and having mixed-use spaces comingled with secure school spaces is no longer optimal.

We had a well-qualified committee research the cost of tearing down the structure of Old Notre Dame and rebuilding versus remodeling. For the proposed project, they found the building is best suited as a remodel. It would cost an estimated \$500,000-\$600,000 just to raze the current building and start from scratch. We have already utilized existing financial resources to address asbestos removal and abatement.

ARCHITECTURAL LAYOUT OF PARISH FAMILY CENTER



MULTIUSE PARISH FAMILY CENTER



OPTIMIZING OUR SPACE ENHANCING SECURITY

Today our school is vibrant, high performing, and growing. However, like all schools we must evolve our facilities and opportunities to attract and retain youth and young families.

Some obvious needs include:

Finding new space for community activities such as fish fries, Feast Day celebrations, bereavement dinners, service group meetings, and others currently held in the school gymnasium/cafeteria. By moving parish events to a new multiuse space in the new Parish Family Center in Old Notre Dame, we can return our school building to a space dedicated solely to our children and their safe and secure Catholic education.

Freeing up space inside the parish school building will lead to desirable classroom expansion.

Specifically:

- † The kitchen located off the current Parish Center gymnasium/cafeteria will be converted to space for a larger and more strategically located school office. The school office is currently located in the center of the building and removed from the main point of entry. Moving the office near the front entrance and in closer proximity to the school resource officer is desirable for both safety and logistical reasons.
- † After this move occurs, the current school office will be converted to several much-needed conference rooms, used throughout the day for small group meetings.
- † The kitchen along the main school hallway, now used for parish fish fry carryouts, will be repurposed into a dedicated computer lab where our students can boost their skills with the latest in technology innovations. Currently, our technology teacher floats from classroom to classroom because space for a dedicated computer lab is unavailable. While this arrangement has worked, it is not desirable.
- † The roof on the school building's older section needs to be replaced.

Enhanced Security and Expanded Room for the Elementary School

- † Increase school security by moving fish fries and other social gatherings from school space to new multiuse space in the Parish Family Center
- † New space on the current school campus for computer lab and technology space
- † Convert "fish fry kitchen" on school campus to school offices that are closer to front access
- † Add school conference rooms and meeting spaces



Approximately seven years ago, a campus planning team was created. Since that time, evaluation of facilities and structures has been ongoing and town hall meetings and open comment periods have been held, all resulting in the completion of four important projects, including:

- † Construction of a new rectory, blessed by Bishop Edward Rice on January 31, 2021.
- † Demolition of the old rectory (August 2021) to make room for more parking.
- † Completion of a new parking lot and grotto on the south side of the church, March 2024. In addition to the new parking spaces, six handicap parking spaces were added—along with a handicap ramp and easy-access church door opener to ease handicap access.
- † Completion of a feasibility study, May and June 2024. This included 160 interviews with individuals and couples to assess the feasibility of a campaign, gather parishioners' perceptions about our parish and a campaign, and evaluate support and cost of these projects.
That brings us to answering the call today. Our major project that exists will require widespread financial support. The three central components leading us to pursue a \$7 million *Extending the Mission ... Building on the Cornerstone of Christ* capital campaign include:
- † Rehab of the DePaul Center (the Old Notre Dame High School) into a complete Parish Family Center. Additionally, we will be able to tighten school security by relocating parish events currently held in the school building to the Parish Family Center.
- † Remodel of the church sanctuary for greater spirituality and reverence with modernized amenities for comfort. The updated sanctuary will be designed to enhance prayer, spiritual centeredness, and worship during Masses, the sacraments, adoration, and other services in which we listen to God's voice and share what is on our hearts, all while creating holy moments.
- † Addition of an expanded gathering space to the church to enhance the parish community and to help us in living one of our parish's core values—hospitality—providing more opportunities to gather and grow community. This will include:
 - A covered drive-through for vehicles, allowing passengers to enter or exit with greater accessibility. This drive-through will lead into the parking lot on the north side of the church (updated to resemble the lot just completed on the south side of the church).
 - An enlarged Gathering Space in the front of church to greet one another before and after Masses. Our vision is to create comfortable seating areas for individuals to visit with one another.
 - Reconfiguration of the church seating area, increasing seating capacity to about 650.

Completion of these three significant projects will complete our Parish Campus—and position the St. Vincent DePaul Parish Family for many decades of faith development, renewed conversion, and evangelization. In 2026, our parish will celebrate its 190th anniversary. These projects set the stage for the future of our parish. In other words, we'll be able to much better Love Jesus, Serve Jesus, and Share Jesus!

SUGGESTED GIFT PLANS

As a member of the parish, your support in our building campaign is significant. We invite you to consider a sacrificial pledge to our *Extending the Mission ... Building on the Cornerstone of Christ* campaign. Although we welcome gifts at levels and periods of time not listed below, we kindly request that you prayerfully consider letting this be your guide in determining your level of support.

TOTAL PLEDGE	INITIAL PAYMENT	ANNUAL PAYMENT	SEMI-ANNUAL PAYMENT	QUARTERLY PAYMENT	MONTHLY PAYMENT
\$1,000,000	\$100,000	\$180,000	\$90,000	\$45,000	\$15,000
\$500,000	\$50,000	\$90,000	\$45,000	\$22,500	\$7,500
\$250,000	\$25,000	\$45,000	\$22,500	\$11,250	\$3,750
\$100,000	\$10,000	\$18,000	\$9,000	\$4,500	\$1,500
\$50,000	\$5,000	\$9,000	\$4,500	\$2,250	\$750
\$35,000	\$3,500	\$6,300	\$3,150	\$1,575	\$525
\$25,000	\$2,500	\$4,500	\$2,250	\$1,125	\$375
\$15,000	\$1,500	\$2,700	\$1,350	\$675	\$225
\$10,000	\$1,000	\$1,800	\$900	\$450	\$150
\$5,000	\$500	\$900	\$450	\$225	\$75
\$4,200	\$420	\$756	\$378	\$189	\$63
\$3,600	\$360	\$648	\$324	\$162	\$54
\$2,500	\$250	\$450	\$225	\$113	\$38

Through our baptism, we have been called to be workers with Christ in His community. Everything we have is a gift from God. It is only right that our gratitude for His generosity should be reflected in the gifts we give back to Him. The gospel story of the widow's mite is a wonderful example of sacrifice. *Extending the Mission ... Building on the Cornerstone of Christ* seeks gifts of equal sacrifice, not equal amounts.

The parish deeply appreciates every gift and sincerely thanks all parishioners for their generosity. We invite all donors to make an initial payment of 10% at the time of their pledge. Please make all checks payable to St. Vincent DePaul.

Ways to Invest

A campaign gift can take a variety of forms with an emphasis on those that can be used immediately. **Some examples include:**

- Cash Pledges
- Appreciated Securities
- Bequests
- Life Insurance
- Life Income Gifts

All gifts are tax deductible and may be remitted monthly, quarterly, semi-annually, or annually.

Building on our rich heritage, we've selected the capital campaign theme of *Extending the Mission ... Building on the Cornerstone of Christ* with the intent of drawing from our Vincentian legacy while planning for our parish's future for decades to come. Our goal is to combine prayers and service from the church community with a well-organized, clearly defined, and transparently communicated capital campaign to provide the financial resources to enhance the discipleship, hospitality, service, and worship elements of our parish community.



"I commend the parish for looking ahead, seeking new ways to speak to a generation searching for beauty, longing for something deeper and more meaningful. May the proposed renovations to the Church and the old high school symbolize a spiritual renovation in the heart of each parishioner, leading to a Eucharistic Revival and spiritual growth at St. Vincent DePaul Parish."

MOST REVEREND EDWARD RICE, BISHOP OF THE DIOCESE OF SPRINGFIELD-CAPE GIRARDEAU



Old Notre Dame **\$4 million**



Sanctuary and Gathering Space **\$3 million**

\$500,000 already being invested in school enhancements from existing parish and school funds.

Please join me, along with the Parish Pastoral Council, the Parish Finance Council, the Campus Planning Team, and Bishop Edward Rice in imploring the guidance of the Holy Spirit, as we discern our ability to raise the funds needed to accomplish the needs as defined. Let us also ask the special intercession of St. Joseph and St. Vincent DePaul. It is exciting to be at St. Vincent DePaul Catholic Church in Cape Girardeau! As we honor our past and prepare for a bright future, let us each consider: What does answering the call mean to me today?

Thank you and God bless you.

Reverend Rick L. Jones

Peace, Reverend Rick L. Jones
Pastor

QUESTIONS AND ANSWERS

Why are we having personal visits for the fundraising strategy?

Personal visits emphasize the distinctive nature of giving, allow for a thorough presentation of the need, give you the opportunity to ask your own questions, and allow visitors to express their enthusiasm for the project. In addition, personal visits place a greater emphasis on stewardship, allowing campaign volunteers to share their faith experience and trust in God.

Why am I asked to consider a specific amount?

Parishioners need to know what levels of support are necessary to raise \$7 million. A gift amount is suggested for you to prayerfully consider because as Christian people we have an opportunity to return to the Lord according to the measure His Goodness has been bestowed upon us. No judgment is made on the level of gift you offer. The important thing is that your gift be prayerfully discerned, proportionate to your means, and reflect a spirit of sacrifice in thanksgiving to God.

What if I choose not to give the amount requested?

We know matters of giving are subject to priorities and your situation is unique unto itself. However, you are asked to prayerfully consider a specific gift. Whatever your response, it should be one of your choosing made in a spirit of sacrifice. All gifts will be beneficial to the work of spreading the Gospel.

St. Vincent DePaul has approximately 1,600 registered households and the goal is \$7 million, why don't we ask each household to donate the same amount? Why are some people asked for a greater amount?

Successful campaigns do not achieve their goals through mathematical calculation. In our parish, like most, 80% of parish support comes from 20% of the parish. A goal of \$7 million cannot be reached without several substantial pledges and others at lesser levels. Some parishioners are blessed with ample resources, and others are not. The important thing is that your gift be prayerfully discerned, proportionate to your means, and reflect a spirit of sacrifice in thanksgiving to God.

I dislike pledging. Why am I asked to make a pledge instead of a one-time gift?

You can make a one-time gift. However, the success of the campaign rests largely on pledges that are payable over five years. In addition, by making a pledge, you are able to donate more than would be otherwise possible in a one-time gift.

I would like to pledge, but our budget is especially tight this year. How can I still participate?

The campaign pledge period is structured over five years. You can determine when you want to start payment of your pledge.

Will my gift remain confidential?

Yes! The only people who will have knowledge of pledge information is the volunteer and the campaign staff. These individuals have been instructed to keep all donor information confidential.